

# NEW TECHNOLOGY AT SWISS LAUNDRY: HIGHER PRODUCTIVITY IN LESS TIME AND WITH LESS RESOURCES



## Swiss Laundry - Buenos Aires, Argentina



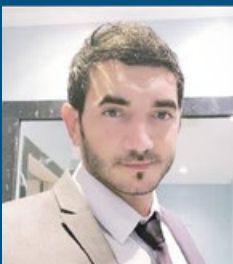
Girbau handled the whole technological modernisation project, from design and planning, with excellent consulting and support services, to supplying high-tech machinery.

**Swiss Laundry** is an industrial laundry in **Buenos Aires**, part of **Swiss Medical Group**. This is a leading group in the health sector in Argentina. Swiss Laundry's business focuses on providing services for the group and for other institutions in Argentina.

In 2018 the company decided to boost its business by embarking on the challenge of streamlining the laundry and increasing its output. Girbau took up the challenge, taking care of modernising the technology, with excellent, immediate results: output increased from **315 to 450 tonnes a month, 43% up**. Water consumption **fell by 76%**, spending on **electricity by 42%** and finally gas consumption **was cut by 21%**.

**Girbau carried out the modernisation project in five phases because of its scale and complexity.**

After a first stage of personalised study, design and advice, Girbau went ahead with installation, fully equipping the laundry: it put in an innovative system of batch washing, the Hygien model, with 12 modules ensuring proper disinfecting and also added the Drain Intercooler system, a water-water exchanger to make use of the heat energy in water drained out of the machinery to preheat water coming in from outside. This achieved **an energy saving of over 30%**. Five 50 kg dryers were put in, along with automatic belts to carry clean linen to the ironing and folding areas.



*"Without Girbau the project would not have been possible.*

*Thanks to the high quality and efficiency of the machinery we've managed to significantly increase our throughput and cut logistics and energy costs drastically.*

*It also met one of the most important, challenging premises we had: to modernise without interrupting our service. In short, we've managed to gain a competitive advantage on the industrial laundry market."*

Sebastián Cimino - General Manager of Swiss Laundry

### Why Girbau?

Overall handling of the whole project: design, planning, consulting and advice, support and supplying high-tech machinery.

Streamlining the business: significantly increased productivity and a drastic cut in logistics and energy costs.

Professional, local and friendly service.

Reliable, quality and robust machinery.

Added value for the client.



Alongside this, a flatwork ironer was replaced by an ironing line with a three-station DRF feeder plus a PC12033 three-roller gas ironer and an FRB folder, allowing increased output while cutting consumption of resources. Finally, the finishing area was expanded with a second tunnel finisher, doubling its capacity for processing uniforms. A second FT-MAXI towel folder was also installed in the towelling linen folding area, again doubling capacity.



## Peculiarities

The modernisation of SMG Laundry also had other positive outcomes. As it does not work 24 hours a day, preventive maintenance was implemented on the machinery in order to avoid any technical hitches. Also, skills and training courses were run for all employees, both technical and operations.

However, the SMG Laundry project involved added complexity. As it works mainly for clients in the health sector, the company requires the highest quality standards in terms of cleanliness and hygiene. To this end, in order to eliminate all organisms, the machinery has to work to much more exacting standards without affecting the final quality of linen.

Technological modernisation		
Maximum capacity	315 Tonnes a month	450 Tonnes a month (43% up)
Shifts	3 shifts	2 shifts
Water	25 l/kg	6 l/kg (76% less)
Electricity	0.9 kWh/kg	0.05 kWh/kg (42% less)
Natural Gas	0.13 m3/kg	0.10 m3/kg (21% less)

## Technical details

**One 12-module Girbau TBS-50 batch washer, Hygien model, with the Drain Intercooler system and five 50 kg dryers:** its control and recovery technology allow maximum energy efficiency and a water consumption of just **4.3 litres per kg of linen**. Moreover, the Intercooler system achieves a **30% saving** on preheating water.

**1 flatwork ironing system with a DRF3 feeder:** this increased throughput to 1000 items per hour, **gaining in efficiency and ironing quality**.

**1 PC120 flatwork ironer:** saving up to **25% of energy** by using gas heating.

**1 FRB flatwork folder:** doubling operating capacity.

**1 FT-Maxi towel folder:** doubling operating capacity. (**over 700 items per hour**).

**1 tunnel finisher:** doubling uniform processing capacity.

**Automatic belts:** carrying clean linen to the ironing and folding areas.